

General Information

Section



General Information

Introduction

First settled in 1623 as a Dutch trading post called the "House of Hope," the City of Hartford is now a place of growth and opportunity for a widely diverse population. The City combines a rich blend of history, culture and architectural gems with a progressive attitude towards business, education and neighborhood economic development. Hartford is home to such internationally known treasures as the Wadsworth Atheneum, the nation's first public museum. Other spectacular historical and performing arts attractions include, but are not limited to, the Mark Twain House, Hartford Stage, Bushnell Memorial Hall and The Artists Collective. Companies such as Aetna, Travelers, Phoenix and The Hartford Financial Services Group have their roots here, in addition to industrial giants like United Technologies. Today the City is experiencing a resurgence evidenced by development in the Front Street District, the planned relocation of a University of Connecticut branch to the City and the State of Connecticut purchase of office space in downtown Hartford. To find out more about the City of Hartford please visit us at www.hartford.gov.

Hartford, the Capital City of Connecticut, was founded in 1636. The Connecticut Colony's Fundamental Orders, adopted in Hartford in 1639, was the first document in history to establish a government by the consent of the people. The City of Hartford was incorporated in 1784 and its Charter was adopted on May 1, 1947, introducing a Council-Manager form of government. An ordinance adopting a revision and codification of the City of Hartford Charter became effective upon approval by the Mayor on July 10, 1990. The voters of the City amended the charter on November 5, 2002 to provide for the Mayor as the chief executive officer of the City. The executive and administrative powers of the City are vested in the Mayor, except as otherwise provided by the Charter.

Elected officials of the City include the Mayor, Treasurer and nine City Council Members. Terms of office are four years. The nine elected council members comprise the Court of Common Council. No more than six council members may be from the same political party. Council positions that become vacant during the four years are filled by majority vote of the Council until the next election. The authority of the Office of the Mayor comes from the City of Hartford Charter, Municipal Code and the State of Connecticut General Statutes. This power includes appointing the Chief Operating Officer, Corporation Counsel, the heads of all departments and all members of all boards, commissions, agencies, authorities and additional bodies of the City.

OFFICIALS OF THE CITY OF HARTFORD

ELECTED

Mayor

Pedro E. Segarra

Court of Common Council

Shawn T. Wooden, Council President
Alexander Aponte, Majority Leader
Larry Deutsch, Minority Leader
Kyle Anderson, Councilor
Joel Cruz, Jr., Councilor
Raúl De Jesús Jr., Councilor
Cynthia Renee Jennings, Councilor
Kenneth H. Kennedy, Jr., Councilor
David MacDonald, Councilor

City Treasurer

Adam Cloud

Registrars of Voters

Sheila Hall
Olga I. Vazquez
Urania Petit

APPOINTED

Chief Operating Officer

Darrell V. Hill

Chief of Staff

Albert G. Ilg (Acting)

Corporation Counsel

Henri Alexandre (Acting)

Town & City Clerk

John Bazzano

CITY DIRECTORY Officials, Department Heads and Directors

Mayor

Pedro E. Segarra
Telephone: (860)757-9500

**Office of the
Chief Operating Officer**

Darrell V. Hill
Telephone: (860)757-9500

**Mayor's Office
Chief of Staff**

Albert G. Ilg (Acting)
Telephone: (860)757-9500

Corporation Counsel

Henri Alexandre (Acting)
Telephone: (860)757-9500

Communication & New Media

Maribel LaLuz
Telephone: (860)757-9731

**Board of Education
Superintendent**

Beth Schiavino-Narvaez
Telephone: (860)695-8000

Hartford Public Library

Mathew Poland
Telephone: (860)695-6300

Court of Common Council

Shawn T. Wooden, Council President
Alexander Aponte, Majority Leader
Larry Deutsch, Minority Leader
Kyle Anderson, Councilor
Joel Cruz, Councilor
Raúl De Jesús, Jr. Councilor
Cynthia Renee Jennings, Councilor
Kenneth H. Kennedy, Jr., Councilor
David MacDonald, Councilor
Telephone: (860)757-9560

Town & City Clerk

John Bazzano
Telephone: (860)757-9751

**Metro Hartford Information
Services (MHIS)**

Sabina Sitaru
Telephone: (860)757-9495

Finance

Leigh Ann Ralls (Acting)
Telephone: (860)757-9311

Assessment

John S. Philip
Telephone: (860)757-9630

Tax Collector

Marc Nelson
Telephone: (860)757-9630

Management, Budget & Grants

Jose L. Sanchez
Telephone: (860)757-9550

City Treasurer

Adam Cloud
Telephone: (860)757-9100

Chief Auditor

Patrick Campbell
Telephone: (860)757-9950

**Families, Children, Youth,
and Recreation**

Jose Colón-Rivas
Telephone: (860)757-9530

**Emergency Services and
Telecommunications**

Clayton Northgraves
Telephone: (860)757-4050

Fire

Chief Carlos M. Huertas
Telephone: (860)757-4500

Police

Chief James C. Rovella
Telephone: (860)757-4000

Public Works

Keith Chapman (Acting)
Telephone: (860)757-9900

Human Resources

Henry Burgos
Telephone: (860)757-9800

Health and Human Services

Raul Pino
Telephone: (860)757-4700

Registrars of Voters

Democratic, Olga Vazquez
Republican, Sheila Hall
Working Families, Urania Pettit
Telephone: (860)757-9830

Development Services

Thomas Deiler, AICP
Telephone: (860)757-9040

Economic Development

Stephen Cole
Telephone: (860)757-9040

Planning

Khara Dodds
Telephone: (860)757-9025

**Housing and Community
Development**

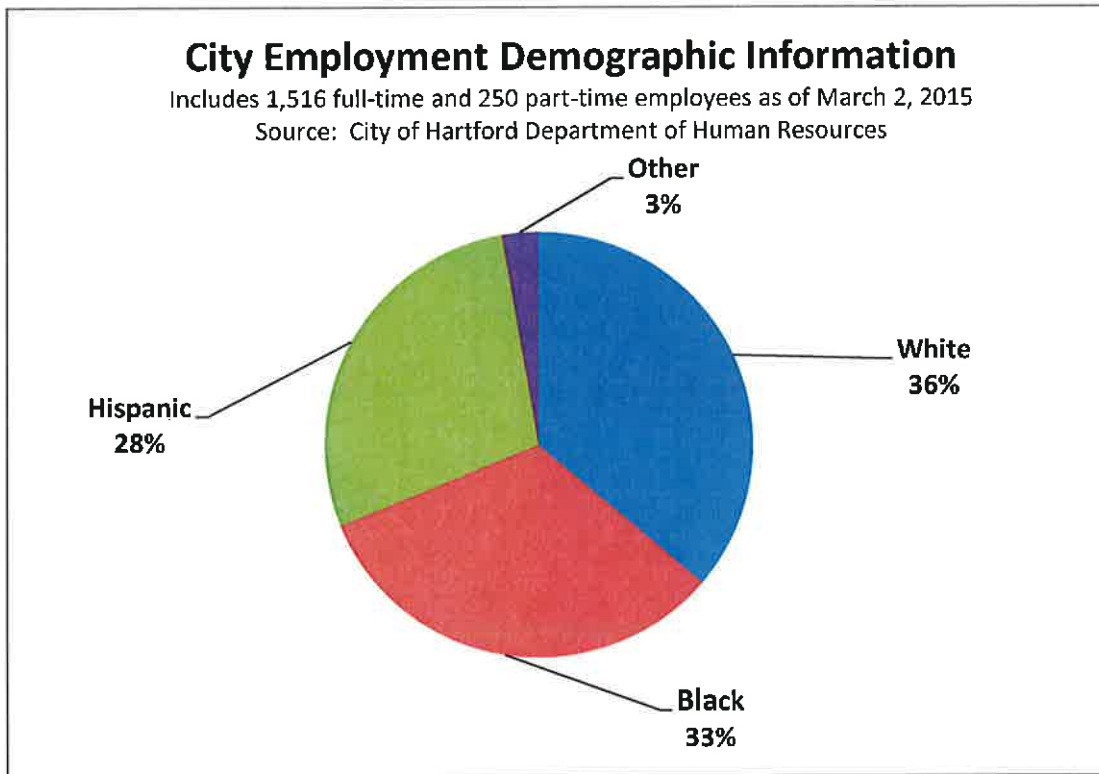
Brian Mathews
Telephone: (860)757-9005

Licenses and Inspections

Daniel J. Loos
Telephone: (860)757-9200

**Marketing, Events and
Cultural Affairs (MECA)**

Kristina Newman Scott
Telephone: (860)757-9040



Physical Description

Land Area: 18.4 square miles

Location: 41.77° north latitude and 72.67° west longitude

Average Monthly Temperatures: July (warmest) Hi: 84
(degrees F) Low: 63

January (coldest) Hi: 35
Low: 16

Average Monthly Precipitation:
(inches)

May (wettest) 4.0
February (driest) 2.7

Source: *The Weather Channel*

Land Cover (2008):

Developed	71.7%
Turf & Grass	10.9%
Other Grasses & Agriculture	2.9%
Deciduous Forest	7.6%
Coniferous Forest	2.0%
Water	3.9%
Non-Forested Wetland	0.1%
Forested Wetland	0.2%
Tidal Wetland	0.0%
Barren	0.7%
Utility Right-of-Way	0.0%

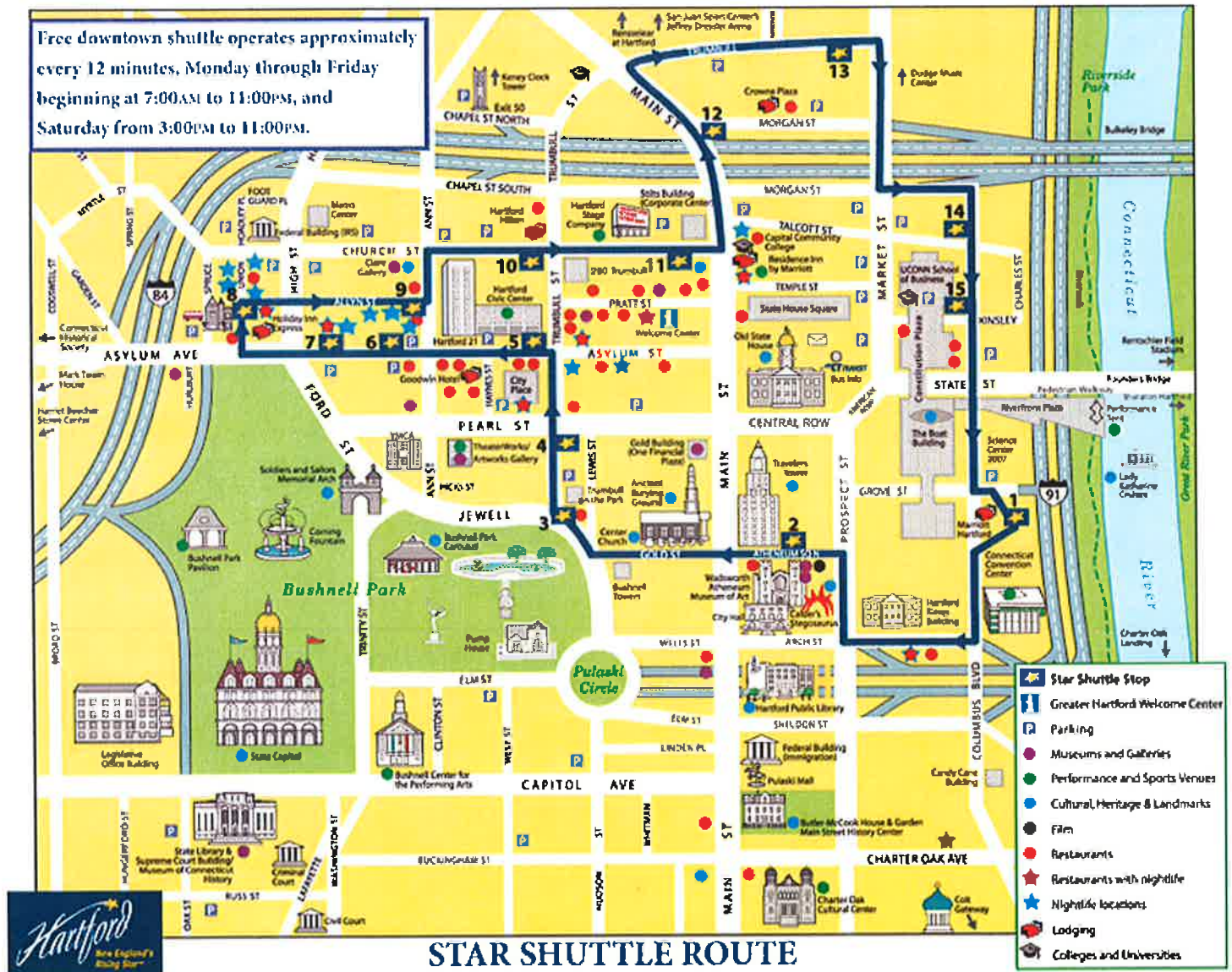
Source: *University of Connecticut, Center for Land Use Education and Research*

Transportation

By Air	<i>Bradley International Airport</i> • Located 15 minutes north of Hartford
By Train	<i>Amtrak</i> • Located downtown at Union Station
By Bus	<i>Peter Pan Bus Lines</i> • Located downtown at Union Station <i>CTTRANSIT</i> • Services the greater Hartford metro area <i>Star Shuttle</i> • Free downtown shuttle (see map below)

Driving Distances to Northeastern U.S. Cities (miles)	
Boston, MA	102
New York City, NY	117
Providence, RI	87

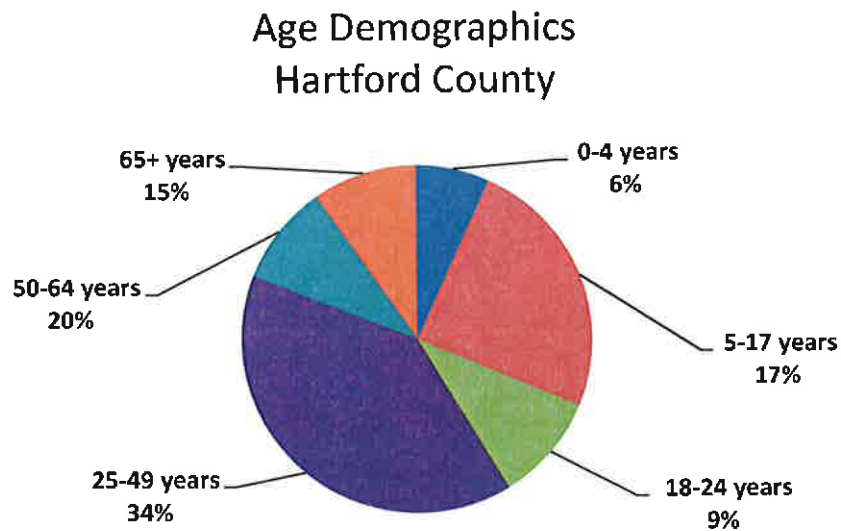
Source: 2008 MapQuest Inc.



Population & Demographics

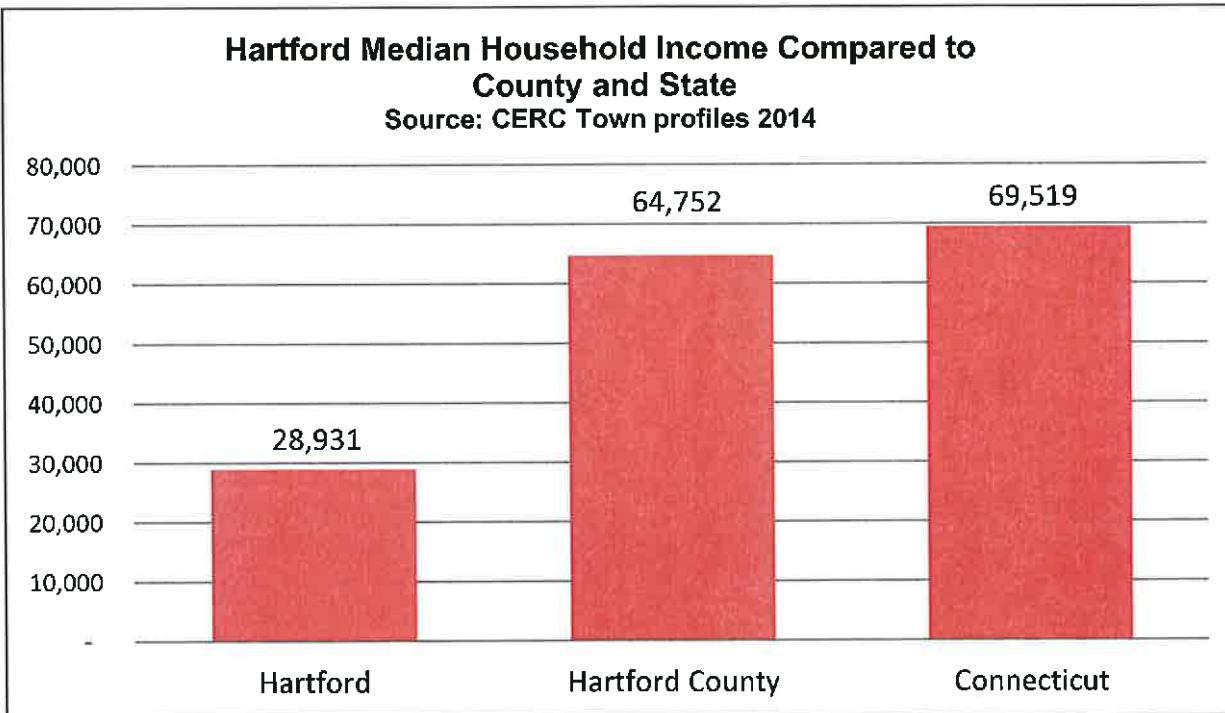
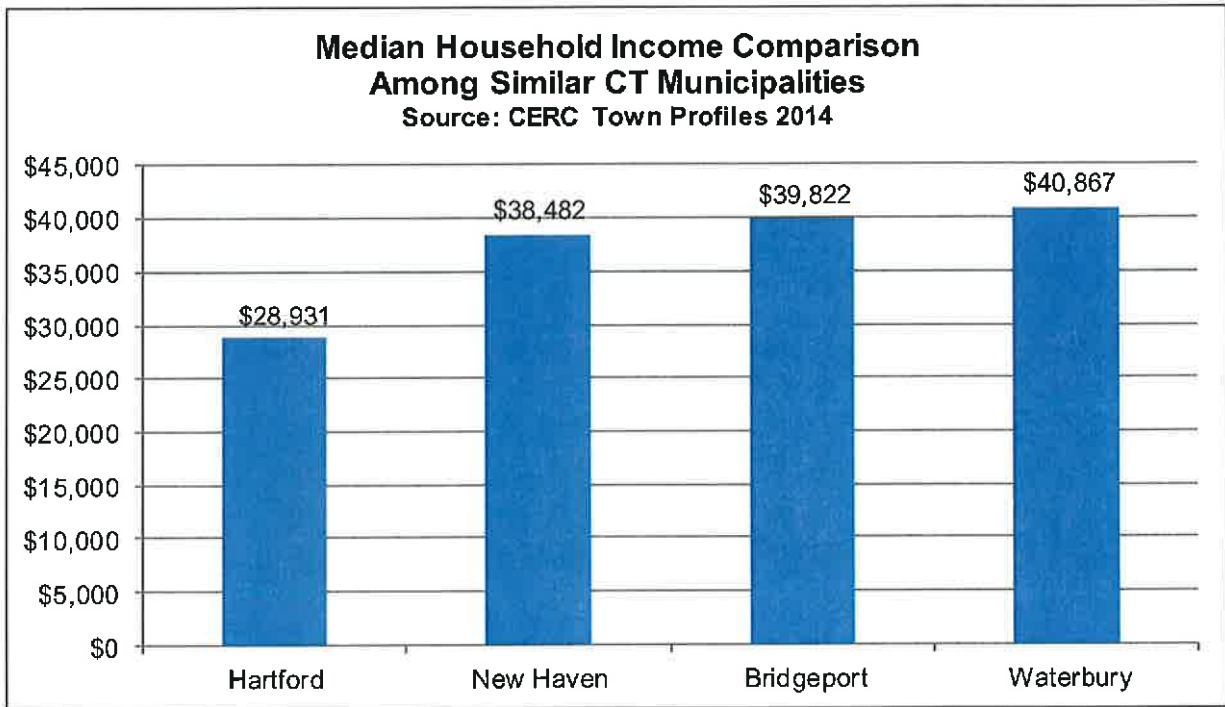
	2000	2012	2013
	121,578	124,879	125,130
2013	Number	Percentage (rounded)	
Population by Age:			
0 – 4 Years	8,487	7	
5 –19 Years	30,629	24	
20 –24 Years	12,571	10	
25 –54 Years	49,606	40	
55 –64 Years	11,710	9	
65 Years and Over	12,127	10	
Males	60,590	49	
Females	64,540	51	
Median Age	30		
Population by Race:*			
White	43,660	35	
Black	47,786	38	
Asian Pacific	3,094	2	
Native American	596	1	
Other/Multi-Race	29,994	24	
Hispanic (any race)	54,289	43	
Non-Hispanic/Latino Ethnicity	70,841	57	

*Race and Hispanic origin guidelines established by U.S. Census Bureau



Source: Connecticut Economic Resource Center Inc. (CERC), Town Profile 2014 (October, 2014)

Economics



Taxes**Ten Highest Taxpayers (2014)** Source: City of Hartford Assessor's Office

ALL PROPERTY					
10 HIGHEST TAXPAYERS					
<u>NAME</u>	<u>Real</u>	<u>Personal</u>	<u>Total</u>	<u>% of Grand List</u>	
1	Connecticut Light & Power	10,614,170	155,566,470	166,180,640	4.59%
2	Hartford Fire Insurance & Twin City Ins.	64,810,830	60,189,080	124,999,910	3.45%
3	Travelers Indemnity Co. Affiliate	62,007,750	57,982,950	119,990,700	3.31%
4	Aetna Life Insurance Company	70,758,170	37,471,380	108,229,550	2.99%
5	HUB Properties Trust	48,977,640	-	48,977,640	1.35%
6	Talcott II Gold, LLC	45,336,480	61,220	45,397,700	1.25%
7	Mac-State Square LLC	44,450,000	-	44,450,000	1.23%
8	Hartford Hospital & HHMOB Corp.	32,418,965	2,433,770	34,852,735	0.96%
9	Conn Natural Gas Corp.	2,166,290	31,273,190	33,439,480	0.92%
10	Hartford Steam Boiler Inspection & Ins.	28,371,770	4,219,810	32,591,580	0.90%
TOTALS		441,272,065	349,197,870	790,469,935	21.82%

Top Employers (2014) Source: State of Connecticut, Department of Labor

Employer	Size Range
The Hartford	5,000 – 9,999 employees
Hartford Financial Services Group	5,000 – 9,999 employees
Northeast Utilities	5,000 – 9,999 employees
City of Hartford Connecticut	5,000 – 9,999 employees
Aetna, Inc.	1,000 – 4,999 employees
Connecticut Children's Medical Center	1,000 – 4,999 employees
Environmental Protection Dept.	1,000 – 4,999 employees
Institute of Living	1,000 – 4,999 employees
Institute of Living Geriatric	1,000 – 4,999 employees
Lincoln Waste Solutions	1,000 – 4,999 employees
Mt. Sinai Rehabilitation Hosp.	1,000 – 4,999 employees
St. Francis Hospital & Med Center	1,000 – 4,999 employees
Travelers	1,000 – 4,999 employees

Labor

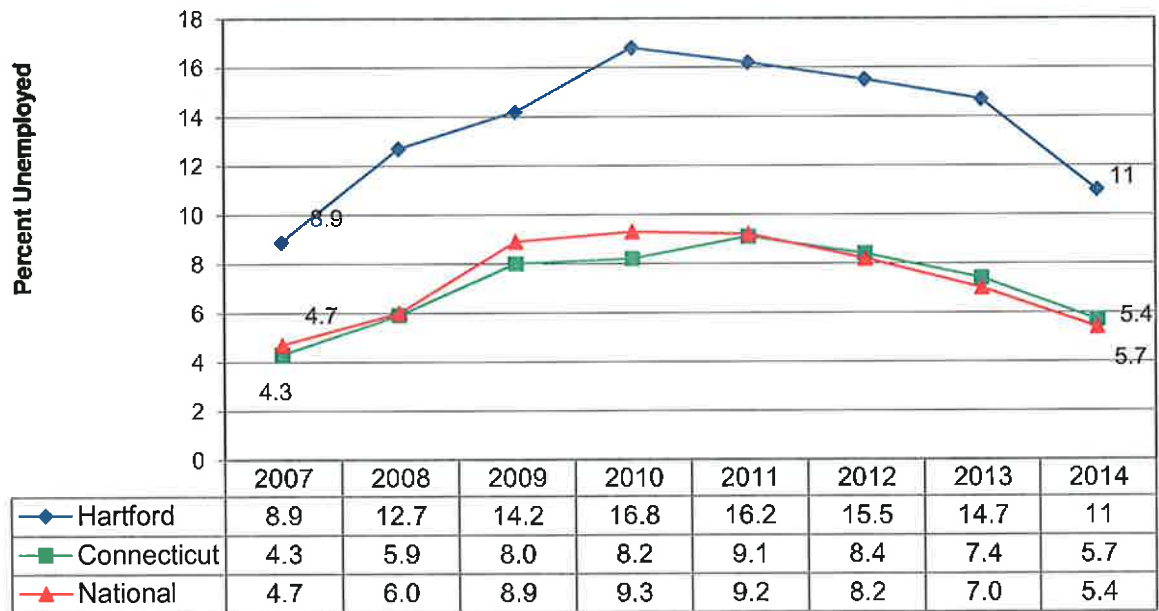
Hartford Labor Statistics

	2008	2009	2010	2011	2012	2013	2014
Total Labor Force	50429	50,819	51,210	51,769	50,414	49,677	49,451
Employed	44,044	43,627	42,630	43,373	42,588	42,396	44,036
Unemployed	6,385	7,192	8,850	8,396	7,826	7,281	5,415
Unemployment Rate	12.7%	14.2%	16.8%	16.2%	15.5%	14.7%	11.0%

Source: Connecticut Department of Labor, Labor Market Information, Annual Averages

Average Annual Unemployment Rates

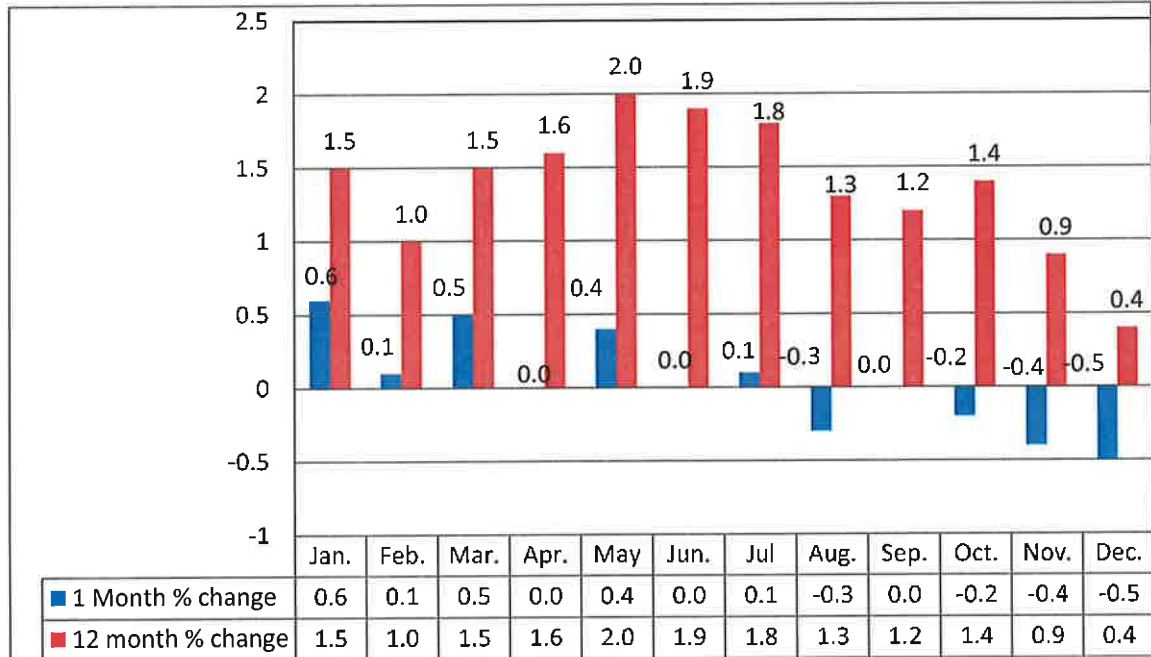
Source: CT Dept of Labor, Annual Averages; Bureau of Labor Statistics



NORTHEAST REGION CONSUMER PRICE INDEX: January-December 2014

Northeast region CPI-U 1-month and 12-month percent changes, all items index (not seasonally adjusted)

Source: Bureau of Labor Statistics



The Consumer Price Index (CPI) is a measure of the average change over time in the prices paid by urban consumers for a market basket of consumer goods and services.

Education

2012 Highest Education Level Attained for Hartford Residents Age 25 and Older

	Number	Percentage of City Population
High School Graduate	38,040	30.4%
Some College	24,138	19.3%
Associate Degree	6,745	5.4%
Bachelor's Degree	11,036	8.8%
Graduate Degree	3,729	3.0%

Source: www.ciresearch.com

Higher Education

Trinity College
 University of Connecticut Law School
 University of Connecticut Graduate Business Learning Center
 Saint Joseph School of Pharmacy
 Rensselaer, Hartford Campus
 Capital Community College
 Connecticut Culinary Institute
 Hartford Conservatory

Hartford Public Schools (HPS)

Hartford public primary and secondary schools enroll over twenty-six thousand students. In addition to the citywide schools, HPS offers regional Inter-district Magnet Schools each having unique characteristics attracting parents and students who find these features responsive to their needs and interests.

Source: 9

Preschools

The City of Hartford operates four Early Learning Centers nationally accredited by the National Association for the Education of Young Children (NAEYC).

The Early Learning centers provide preschool, infant and toddler care.

Source: Department of Families, Children, Youth & Recreation

Libraries

Hartford Public Library

- Central Library located downtown
- 9 additional branch locations throughout the City

Connecticut State Library

Source: Hartford Public Library 2014



Parks and Recreation

Source: Hartford Department of Public Works 2009

- Total Parks – 37
- Athletic Fields – 70
- Total Acreage – 2,300

Large Multi-Use Parks:

Batterson
 Bushnell
 Colt

Elizabeth
 Goodwin
 Hyland / Rocky Ridge
 Keney Golf Course

Keney
 Pope
 Riverside

Public Golf Courses:

Goodwin Golf Course



Source: www.arrakeen.ch

Cultural Arts and Entertainment

Attractions

Wadsworth Atheneum and Museum of Art
Mark Twain House & Museum
Harriet Beecher Stowe Center
Charter Oak Cultural Center
Raymond E. Baldwin Museum of Connecticut History
Connecticut State Armory and Arsenal
Soldiers and Sailors Memorial Arch
Old State House

Hartford Stage
Theater Works
The Artists Collective
Bushnell Center for Performing Arts
Connecticut Commission on the Arts Gallery
Gallery of American Art
Connecticut Science Center
Real Art Ways
Mort & Irma Handel Performing Arts Center

Event Locations

XL Center
Connecticut Convention Center
Connecticut Expo Center
Comcast Theater

Sports

- One American Hockey League team calls Hartford home.
- The Hartford Wolf Pack plays at the XL Center which seats up to 16,000 fans.
- Beginning in 2015 the University of Connecticut Ice Hockey Team, part of Hockey East, will play their conference home games at the XL Center.
- The University of Connecticut men's and women's basketball teams also make the XL Center their part-time home, and in 2015 held the American Athletic Conference Men's basketball championship tournament. Both teams have multiple National Championships with the women holding ten titles and the men four.
- The Trinity College men's squash team has 15 National Championships, achieving its most recent championship in 2015.



GLOSSARY OF TERMS

A

ACCOUNT – A separate financial reporting unit. All budgetary transactions are recorded in accounts.

ACCOUNTING SYSTEM – The total set of records that are used to record, classify, and report information on the financial status and operation of an entity.

ACTIVITY – A task undertaken to achieve an output.

ADOPTED BUDGET – The budget for the ensuing fiscal year that has been approved by the Court of Common Council.

ALLOCATION – The distribution of available monies, personnel and equipment among various city departments, divisions or centers.

ANNUAL BUDGET – An estimate of expenditures for specific purposes during the fiscal year and the proposed means (estimated revenues) for financing those programs.

APPROPRIATION – An authorization granted by a legislative body to make expenditures and incur obligations for specific purposes. Appropriations are usually limited in amount and to the time during which they may be expended.

ASSESSED VALUE – The fair market value placed upon real and personal property by the City as the basis for levying property tax.

ATTRITION – A reduction in the City's Workforce, as a result of resignations, retirements, terminations and any other reason for leaving the job.

AUDIT – A study of the City's accounting system to ensure that financial records are accurate and in compliance with all legal requirements for handling of public funds, including state law and City Charter.

B

BALANCED BUDGET – A budget in which the projected expenditure amount is equal to the projected revenue. The City of Hartford's City Charter mandates a balanced budget.

BOND – A certificate of debt issued by an entity, guaranteeing payment of the original investment (principle), plus interest, by a specified future date (maturity date). Bonds are used typically for long-term debt.

BOND ANTICIPATION NOTES – Short-term interest bearing notes issued in anticipation of bonds to be issued at a later date.

BUDGET – A budget is a plan for the accomplishment of programs related to objectives and goals within a definite time period, including an estimate of resources required, together with an estimate of the resources available.

BUDGET CALENDAR – The schedule of key dates or milestones the City follows in the preparation and adoption of the budget.

BUDGET DOCUMENT – The instrument used by the budget-making authority to present a comprehensive financial plan of operations.

BUDGET MESSAGE – A general discussion of the budget presented to the Court of Common Council written by the Mayor that discusses budget highlights and is presented as part of the budget document.

C

CAPITAL IMPROVEMENT PLAN (CIP) – A plan for capital expenditures to be incurred each year over a five year period setting forth each capital project, the duration of the project and the amount to be expended each year in financing those projects.

CAPITAL OUTLAY – Accounts for the purchase, construction or renovation of major capital assets.

CASH FLOW BUDGET – A projection of the cash receipts and disbursements anticipated during a given period.

COMMUNITY DEVELOPMENT BLOCK GRANT (CDBG) – An annual Federal grant received from the Department of Housing and Urban Development. It is primarily used for housing rehabilitation, public services and other grant eligible activities.

D

DEBT SERVICE – The payment of principal and interest on borrowed funds such as bonds and loans.

DEFICIT – (1) The excess of an entity's liabilities over its assets (2) the excess of expenditures over revenues during an accounting period.

DEPARTMENT – An organizational or budgetary unit established by City Charter or Municipal Code to carry out specified public services.

DEPRECIATION – The decrease in value of physical assets due to use and the passage of time.

E

ENCUMBRANCE – An obligation in the form of a purchase order, contract or salary commitment that is chargeable to an appropriation, and for which part of an appropriation is reserved.

ENTERPRISE FUNDS – A fund established to account for operations that are financed and operated in a manner similar to private business enterprises. The intent is that the full costs of providing the goods or services be financed primarily through charges and fees thus removing the expenses from the tax rate.

EXPENDITURES – The disbursement of appropriated funds to purchase goods and/or services.

F

FAIR MARKET VALUATION – The value of a piece of real estate in the open market. Used to determine the assessed value of property for taxation purposes.

FIDUCIARY FUNDS – Funds used to report assets held in a trustee or agency capacity for others and which therefore cannot be used to support the government's own programs. The fiduciary fund category includes private purpose trust funds, agency funds, pension (and other employees benefit) trust funds and investment trust funds.

FINANCING PLAN – The estimate of revenues and their sources that will pay for the service programs outlined in the annual budget.

FISCAL YEAR (FY) – Any period of 12 consecutive months designated as the budget year. The City of Hartford's budget year begins July 1st and ends June 30th.

FULL-TIME EQUIVALENT (FTE) – A part-time position converted to the decimal equivalent of a full-time position based on 2,080 hours per year.

FUND – An independent fiscal and accounting entity with a self-balancing set of accounts recording cash and/or other resources together with all related liabilities, obligations, reserves and equities that are segregated for the purpose of carrying on specific activities.

FUND BALANCE – The excess of an entity's assets over its liabilities also known as excess revenues over expenditures or net assets.

G

GENERAL FUND – A governmental fund established to account for the major general operations of the City except those that are required to be accounted for in a separate fund

GOVERNMENT FINANCE OFFICERS ASSOCIATION (GFOA) – A private, nonprofit organization which has actively supported the advancement of governmental accounting, auditing and financial reporting since 1906.

GRAND LIST – Assessed value of all taxable property in the City.

GRANT – Funds obtained through an application process that enhances the City's ability to provide services and activities.

I

INFRASTRUCTURE – The basic facilities, equipment, services, and installations needed for the growth and functioning of a county, community or organization.

INTERFUND TRANSFERS – Payments from one administrative budget fund to another, which result in the recording of a receipt and an expenditure.

INTERNAL SERVICE FUNDS – Used to account for and finance the City's risks of loss for Employee Benefits, Workers Compensation, and Liability and Property Damage.

L

LEGAL MANDATE – An action, restriction, prohibition, benefit or right established or required by federal, state or local law.

LIABILITY – Debt or other legal obligations arising out of transactions in the past, which must be liquidated, renewed or refunded at some future date.

LOCAL CAPITAL IMPROVEMENT PROGRAM (LoCIP) – The State of Connecticut provides financial assistance to municipalities for eligible projects in the form of entitlement grants funded with State general obligation bonds.

LONGEVITY – Monetary payments to permanent full time employees who have been in the employ of the City for a minimum of six years.

M

MILL RATE – The mill rate is the rate of taxation levied on property subject to taxation under Connecticut General Statutes. One mill is equal to 1/1000 of a dollar. For example, a tax rate of 20 mills is equivalent to \$20.00 per \$1,000 of assessed value.

MISSION STATEMENT – The statement that identifies the particular purpose and function of a department.

MODIFIED ACCRUAL – Basis of accounting for all governmental funds and expendable trust and agency funds under which revenues are recorded when they become measurable and available. Expenditures are recorded when the liability is incurred, except for interest on general long-term obligations, which is recorded when due.

N

NON-PERSONNEL EXPENSES – An expenditure group that includes supplies and materials, contractual services, communications and transportation expenses, and other miscellaneous expenses.

O

OBJECTIVES – The goal of a specified course of action.

OPERATING BUDGET – A budget for general revenues and expenditures such as salaries, utilities, and supplies.

ORDINANCE – A formal legislative enactment by the City that carries the full force and effect of the law within corporate boundaries of the City unless in conflict with any higher form of law, such as state or federal.

OUTCOMES – Quality performance measures of effectiveness and of achieving goals. (e.g., customer satisfaction, awareness level, etc.)

P

PERFORMANCE MEASURE – An indicator of the attainment of an objective; it is a specific quantitative measure of work performed or services provided within an activity or program, or it may be a quantitative measure of results obtained through a program or activity.

POLICY – A definite course of action adopted after a review of information and directed at the realization of goals.

PORCHES – City of Hartford program that provides financing to homeowners who wish to improve the front facades of their one to six-family residential structures.

PRIORITY – A value that ranks goals and objectives in order of importance relative to one another.

PROCEDURE – A method used in carrying out a policy or plan of action.

PROGRAM – Group activities, operations or organizational units directed to attaining specific objectives and achievements and budgeted as a sub-unit of a department.

PROPRIETARY FUND – Enterprise and internal services funds that are similar to corporate funds, in that they are related to assets, liabilities, equities, revenues, expenses, and transfers determined by business or quasi-business activities.

R

RECOMMENDED BUDGET – The proposed operating and capital budgets submitted to the Court of Common Council by the Mayor.

RESERVES – An account used to indicate that portion of fund equity, which is legally restricted for a specific purpose or not available for appropriation and subsequent spending.

REVENUE – The income received by the City in support of a program of services to the community; includes such items as property taxes, fees, user charges, grants, fines, interest income and miscellaneous revenue.

REVISED BUDGET – Any changes and/or amendments made to the original Adopted budget recommended by the Mayor and approved by Council.

S

SUBMITTED BUDGET – Departmental estimates of revenue and expenditures for the ensuing fiscal year that are reviewed and used in formulating the Recommended Budget.

SUNDRY EXPENSES – A group of city-wide expenditures for the Non Operating Department, Benefits and Insurances, and Debt Services.

SUPPLEMENTAL APPROPRIATION – Appropriations made by the City Council to cover expenditures that exceed the adopted appropriation level.

T

TAX ABATEMENT – Legal reduction or cancellation of tax obligation.

TAXABLE GRAND LIST – Reflects all property that is not subject to Section 12-81 of the Connecticut General Statutes which exempts from taxation federal, state, municipal, church and school property if that property is used for the purpose for which the agent is exempted.

Tax Levy – Taxes that are imposed and collected.

Tax Rate – The amount of tax levied for each \$1,000 of assessed value.

ABBREVIATIONS /ACRONYMS

BOE – Board of Education

CEDF – Community Development Economic Fund

CHRO – Commission on Human Rights and Opportunities

CIP – Capital Improvement Plan

CDBG – Community Development Block Grant

CPD – Community Planning and Development (HUD Office of)

CRRA – Connecticut Resources Recovery Act

EOE – Equal Opportunity Employer

FICA – Federal Insurance Contributions Act

FOI – Freedom of Information

FTE – Full-Time Equivalent

FY – Fiscal Year

“Gap” – Financing Gap (Affordable Housing Program)

GFOA – Government Finance Officers Association

HEDCO – Hartford Economic Development Corporation

HOME – Home Investment Partnerships (CPD Program)

HPLF – Housing Preservation Loan Fund

LSNI – Livable and Sustainable Neighborhood Initiative

LoCip – Local Capital Investment Program

MERF – Municipal Employees Retirement Fund

MPP – Municipal Prohibited Practice

NSP – Neighborhood Stabilization Program

NRZ – Neighborhood Revitalization Zones

PILOT – Payment in Lieu of Taxes

SAMA – Spanish American Merchant Association

TAB Loans – Targeted Small Business Assistance